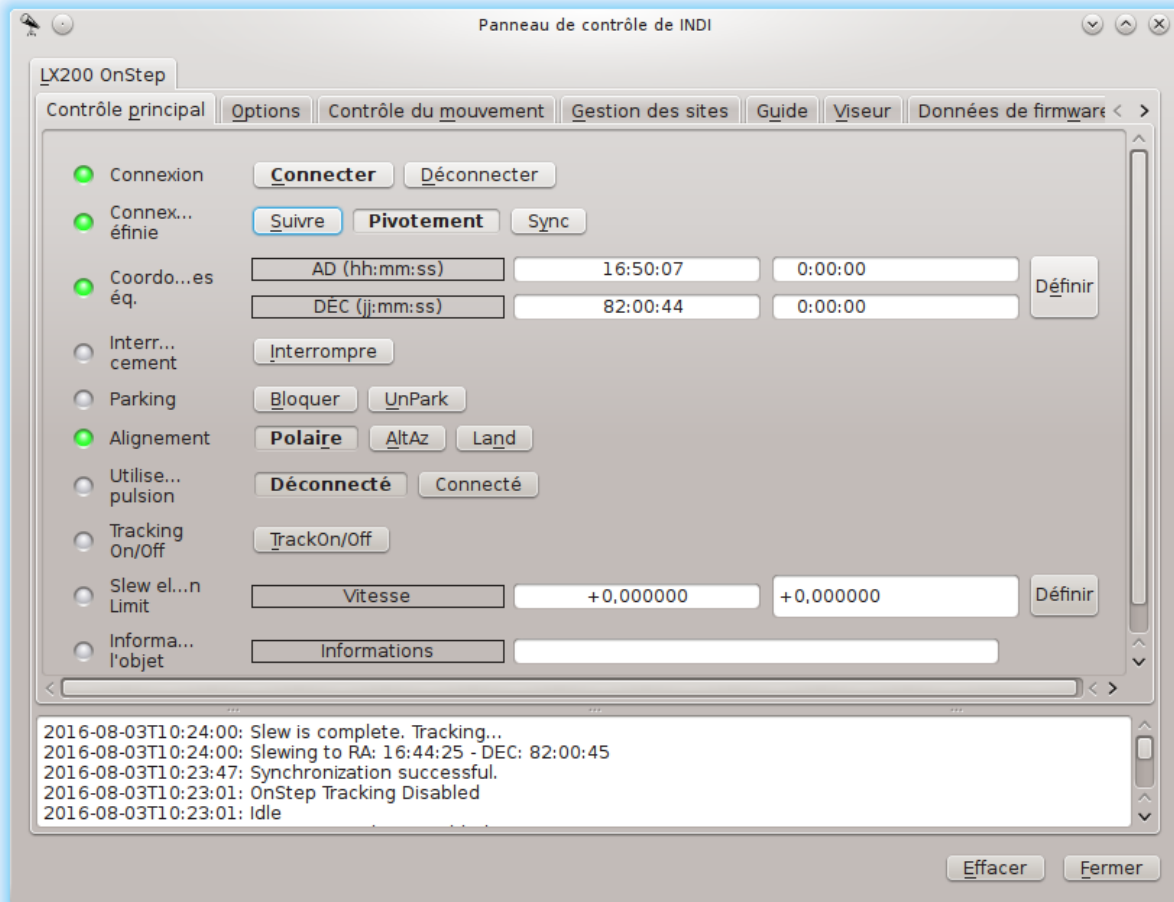
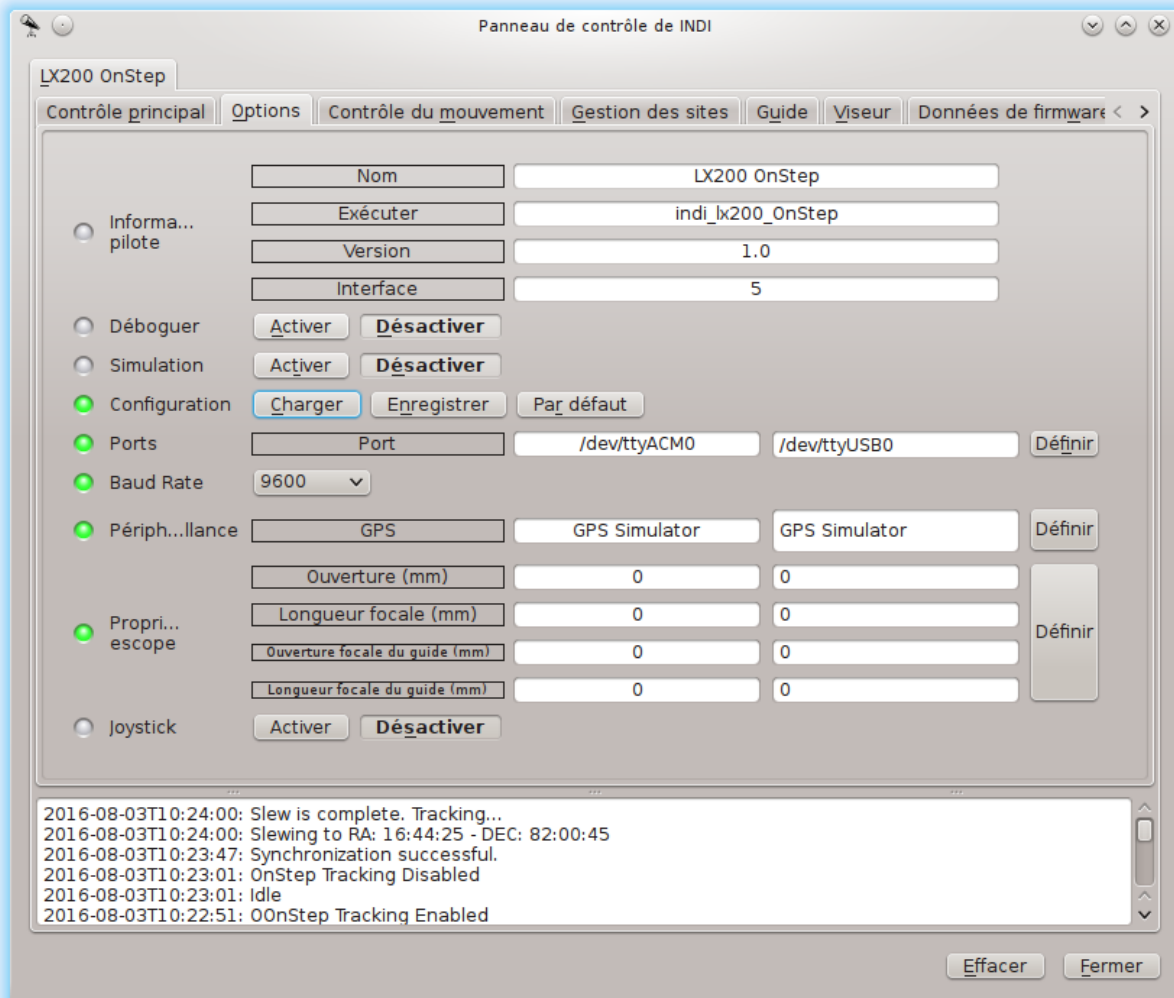


Indi Driver for OnStep Arduino Mega2560 controller

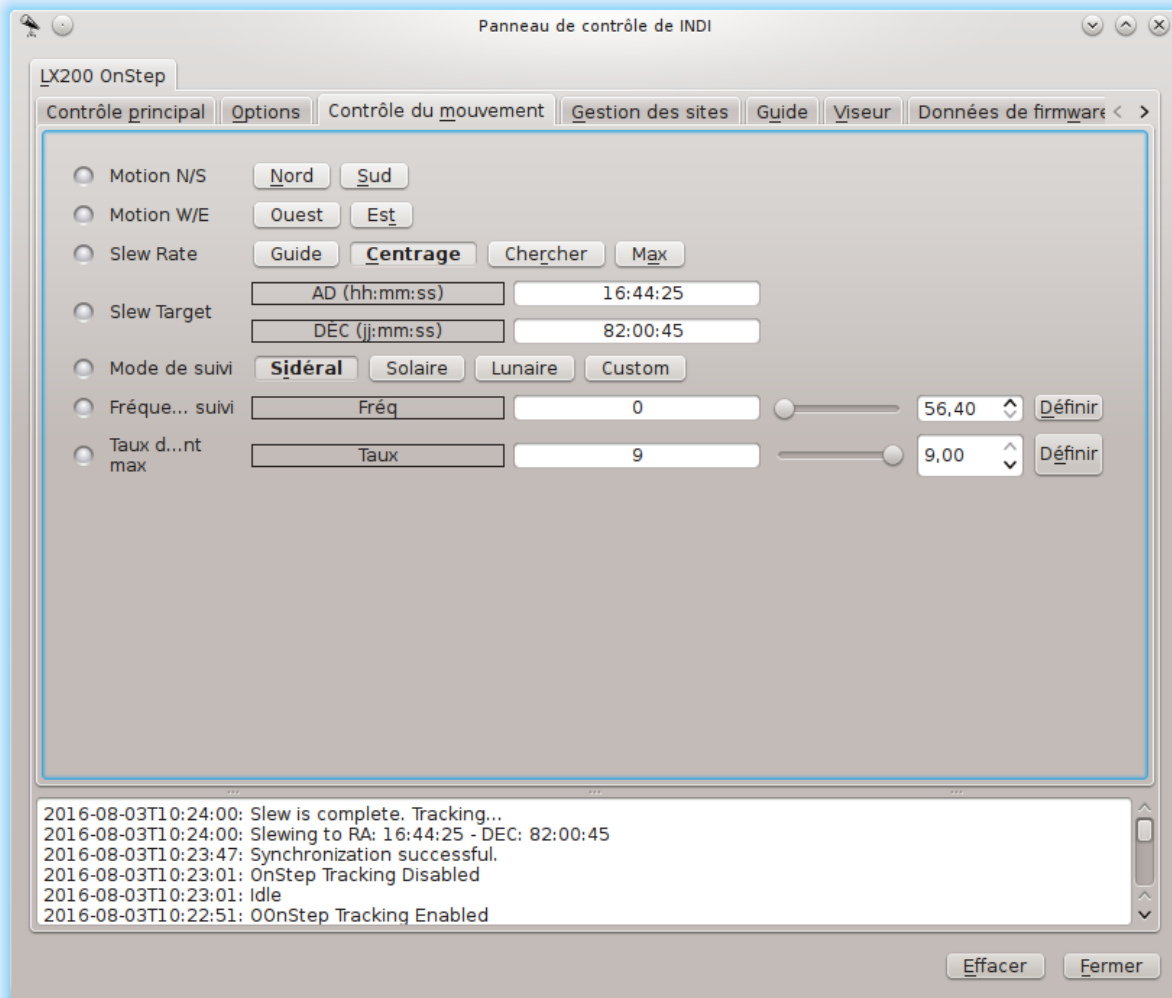
Control Panel Main



Options



Slew Control



Sites

Panneau de contrôle de INDI

LX200 OnStep

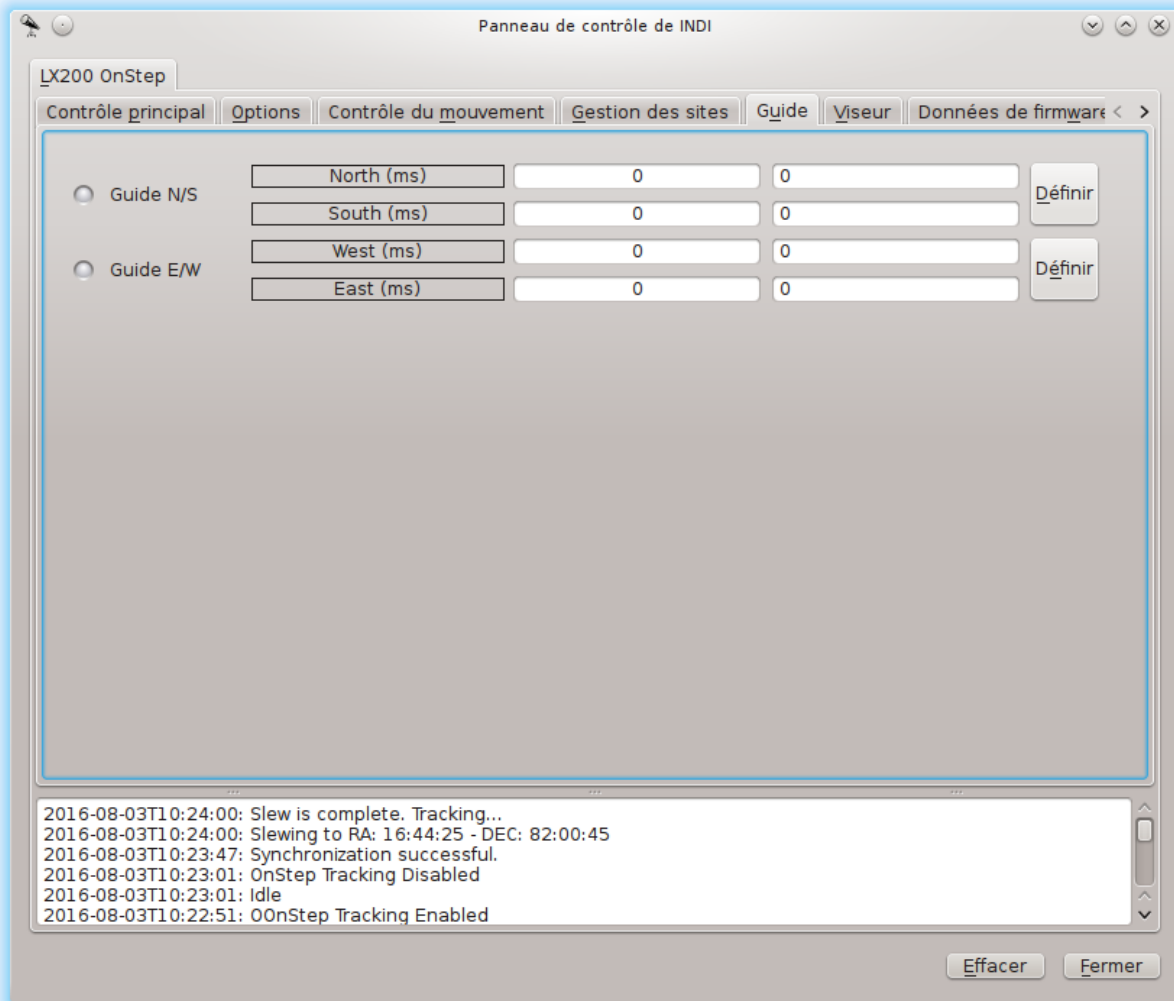
Contrôle principal | Options | Contrôle du mouvement | **Gestion des sites** | Guide | Viseur | Données de firmware < >

<input type="radio"/> UTC	Heure UTC	2016-07-31T16:48:46		Heure
	Décalage avec le temps UTC	02		
<input checked="" type="radio"/> Empla...scope	Lat (jj:mm:ss)	48:13:00	0:00:00	Définir
	Lon (jj:mm:ss)	7:39:00	0:00:00	
	Elevation (m)	0	0	
<input checked="" type="radio"/> Sites	Site 1 Site 2 Site 3 Site 4			
<input checked="" type="radio"/> Nom du site	Nom	Schoenau	Schoenau	Définir

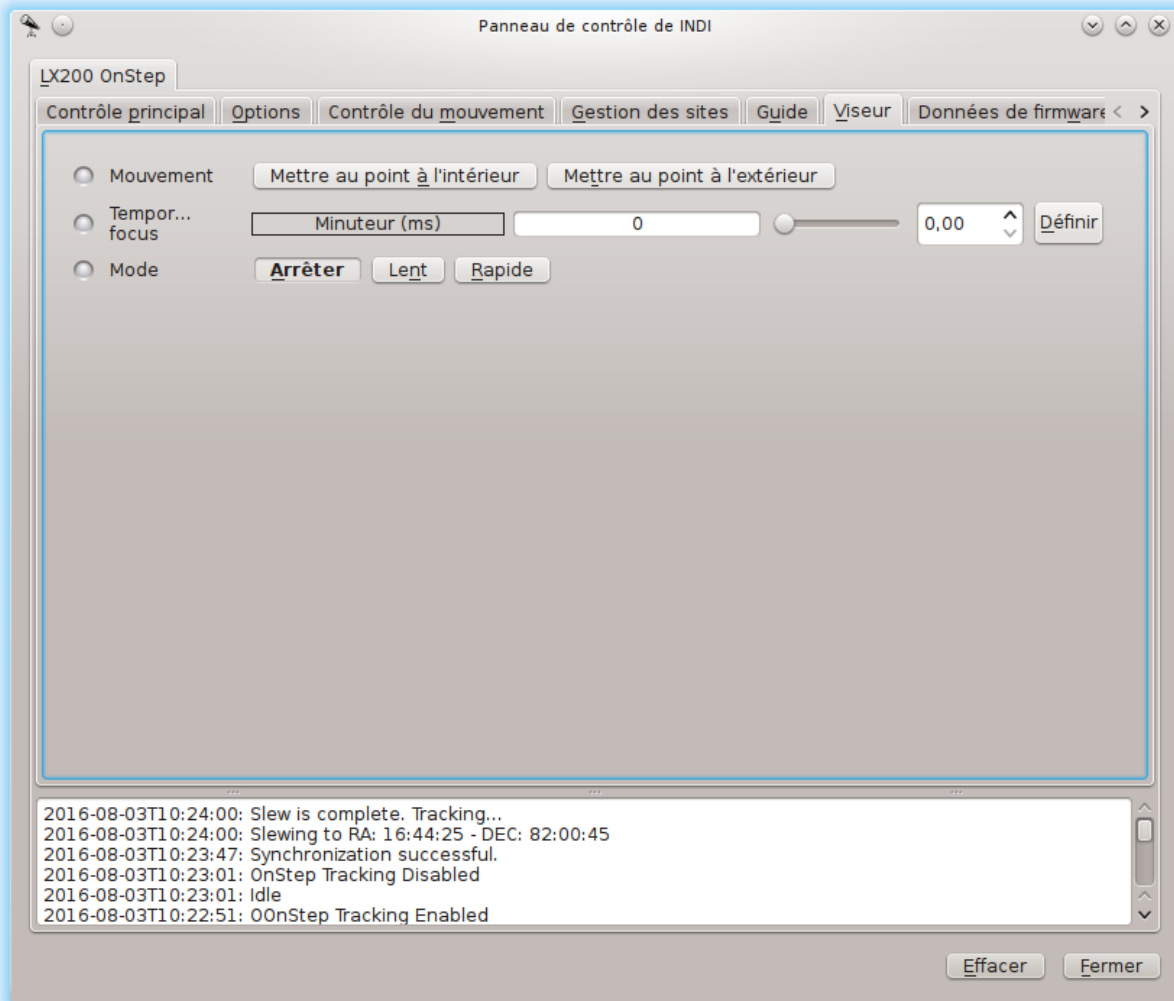
2016-08-03T10:24:00: Slew is complete. Tracking...
2016-08-03T10:24:00: Slewing to RA: 16:44:25 - DEC: 82:00:45
2016-08-03T10:23:47: Synchronization successful.
2016-08-03T10:23:01: OnStep Tracking Disabled
2016-08-03T10:23:01: Idle
2016-08-03T10:22:51: 00nStep Tracking Enabled

Effacer Fermer

Guiding



Focuser (not implemented on the OnSpec Controller, ToDo)



Firmware Info

The screenshot shows the LX200 OnStep software interface. The window title is "Panneau de contrôle de INDI". The main menu includes "Contrôle principal", "Options", "Contrôle du mouvement", "Gestion des sites", "Guide", "Viseur", and "Données de firmware". The "Données de firmware" tab is selected, displaying a table of firmware information.

Inform... rmware	Date	06 17 16
	Heure	12:00:00
	Numéro	1.0a34
	Nom	On-Step

Below the table is a log window showing the following messages:

```
2016-08-03T10:24:00: Slew is complete. Tracking...
2016-08-03T10:24:00: Slewing to RA: 16:44:25 - DEC: 82:00:45
2016-08-03T10:23:47: Synchronization successful.
2016-08-03T10:23:01: OnStep Tracking Disabled
2016-08-03T10:23:01: Idle
2016-08-03T10:22:51: 00nStep Tracking Enabled
```

At the bottom right, there are two buttons: "Effacer" and "Fermer".

Object Library, Not implemented, ToDo

